

# Faculty of Medicine

AIN SHAMS UNIVERSITY



## Vision

Faculty of Medicine, Ain Shams University yearns for regional leadership and global partnership in medical education to promote community health

## Mission

Faculty of Medicine, Ain Shams University, is dedicated to quality of trained physician of competitiveskills nationally and regionally, capable of lifelong learning, teaching and training, committed to professional conduct and ethics. The institution upholds ongoing development of programs, curricula and scientific research, with special emphasis on applied researches & healthcare programs to satisfy communityneeds and environmental enhancement.

ASU

Ranking & Accreditation

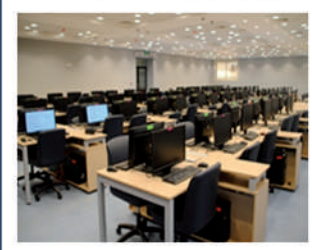
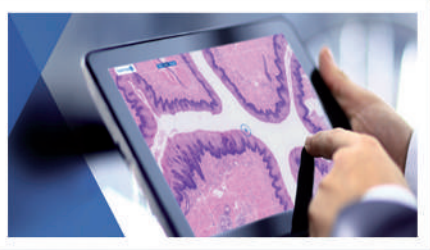
 **STARS™**  
RATING SYSTEM



## TEACHING METHODS

The program uses specially designed learning activities to fulfill its aims such as :

- Structured interactive lectures.
- Small group follow-up sessions.
- Integrated problem oriented sessions.
- Integrated multidisciplinary sessions.
- Practical and clinical sessions delivering authentic training.
- Field and placement visits.



## ASU Hospitals

- Referral Hospitals providing all levels of medical care.
- The first & only Geriatrics Hospital in the MENA region.
- First Center of Respiratory Endoscopy in Egypt.
- One of the first hospitals in the MENA region to establish heart care.
- High Success rates in liver transplantation.
- Outstanding Psychiatry Center.

**7** Hospitals

**6** Medical Centers

**4000** Beds

**150,000** inpatients per year

**1.5** millions of Outpatients per year

*Your Gate to Excellence*



## Education

### Main Stream Program

Undergraduate programs with a total of 215 credit hours (5+2).

- Innovated program that drives & leads change.
- Adopts a number of core clinical cases.
- Early clinical integration.
- Spiral revisits.

### Extended Module Program (EMP)

## National & International Collaboration


## Special Activities for International Students

- International non-Arabic speaking students section.
- Neglected Tropical Diseases annual course.
- Elective courses for undergraduate & postgraduate students.
- Students & staff exchange in all faculty departments.
- Online courses as comprehensive stroke management course

## Students E-Services

All the student needs is on one page: course registration, fees payment, e-learning platform, study schedules, exam schedules and results.

## Admission

Our programs accept students who have got a minimum admission grade for acceptance set by the main admission coordination office for Egyptians or the general administration for international students.

International students can apply via the Ministry of higher education general administration for international students website.

### For more information :

International Students & Mobility Office :

[ismo@asu.edu.eg](mailto:ismo@asu.edu.eg)

**Medicine:** Dr. Nayera Samy

[iso@med.asu.edu.eg](mailto:iso@med.asu.edu.eg)

*Your Gate to Excellence*

